

Work in Progress: Cedarwood House, Portadown



04

Living Design

This design for a contemporary house type in the countryside was

inspired by the desire to create a modern dwelling form that would respond to

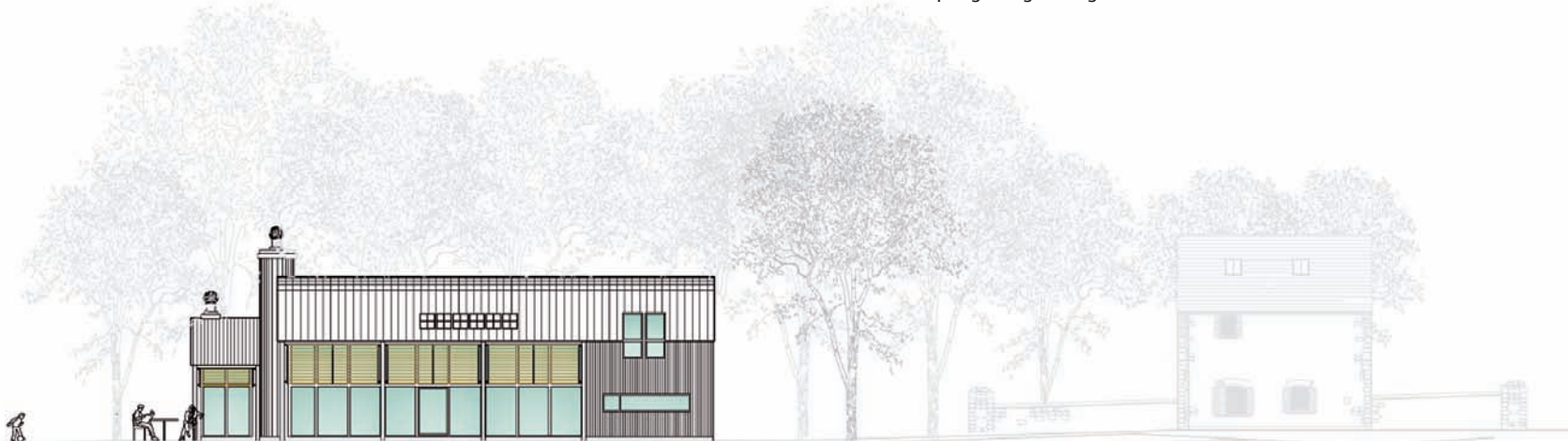
environmental issues and have a definite relationship to the landscape. The form

of the house, with the traditional low roof and long ridge, reflects the vernacular architecture of its rural location whilst interpreting this in a fresh and contemporary manner.

The site, which is visually private, lends itself to large areas of glazing to the south whilst excessive solar gain is controlled with a series of external louvers. It is proposed that the house be a 'passive house' with a super-insulated external envelope and triple glazing throughout.

The use of cedar wood cladding to the exterior of the house reflects the green credentials and provides a visual contrast to the zinc interlocking roof covering. The interior of the house is largely open plan with the family living space flowing through the ground floor and first floor volume. This large volume will be maintained at an even temperature as the passive house principle lends itself to large spaces with minimal heating. ■

**Paul McAlister
Architects Ltd**



West elevation